

Setting new standards in simplicity, connectivity and affordability.

Telemetry

by G&G Controls

The Panel People



A WASTEWATER CONTROL PANEL USING SWITCHGEAR (SUCH AS CONTACTORS, OVERLOADS AND RELAYS), WITH CLOUD CONNECTIVITY.

About

Telemetry is a wastewater pump panel designed to simplify installations and reduce setup time and costs. Developed with engineers in mind, this dual pump panel comes with contactors, overloads, a built-in light, overload reset *and* telemetry. It offers flexible connectivity options—SIM card, WiFi, or Ethernet— and supports single-phase, 3-phase, or 3-phase + neutral supplies (so you don't have to worry about specifying the right configuration). This makes it suitable for almost any application. Common failure points, like the stepping relay and transformer, have been eliminated!



POWER: The same Telemetry panel can take either 230V or 400V (with no neutral required).

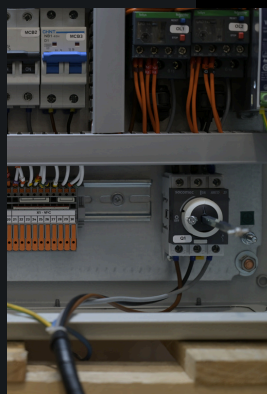
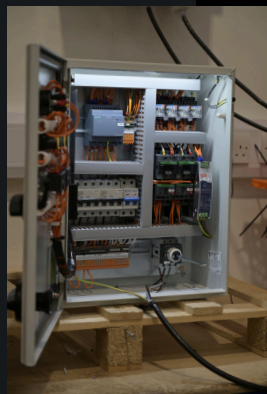
CONNECTIVITY: Connect using WiFi, broadband cable or SIM card. Telemetry can send email or text alerts to an unlimited number of contacts.

IMPROVED CONTROL: Overload reset buttons included as standard. Enhanced pump management (e.g. when pump one is turned 'off' then pump two stays as the duty pump)

PANEL OFFLINE: Pump 1 and Pump 2 trip and High level alarm notifications come enabled on all panels.

COMPONENTS: All the components used in a Telemetry panel are industrial grade such as Schneider enclosure, contactors and overloads, Socomec isolator, Wago terminals, volt free contacts, no failure-prone stepping relay.

SIZE: The enclosure is mild steel by Schneider, 500mm high, 400mm wide and 200mm deep for a dual pump DOL, with a door interlocked isolator.



£899

+ £11.50 delivery and VAT

10

Working days lead time

01782 280 577

www.telemetry.co.uk

sales@gandgcontrols.co.uk